

033359

RECEIVED  
LARAMIE COUNTY  
CHEYENNE, WY.

'87 AUG 28 AM 9 09

CERTIFIED LAND CORNER RECORDATION

DESCRIPTION OF CORNER EVIDENCE FOUND, AND ORIGINAL RECORD (If known)

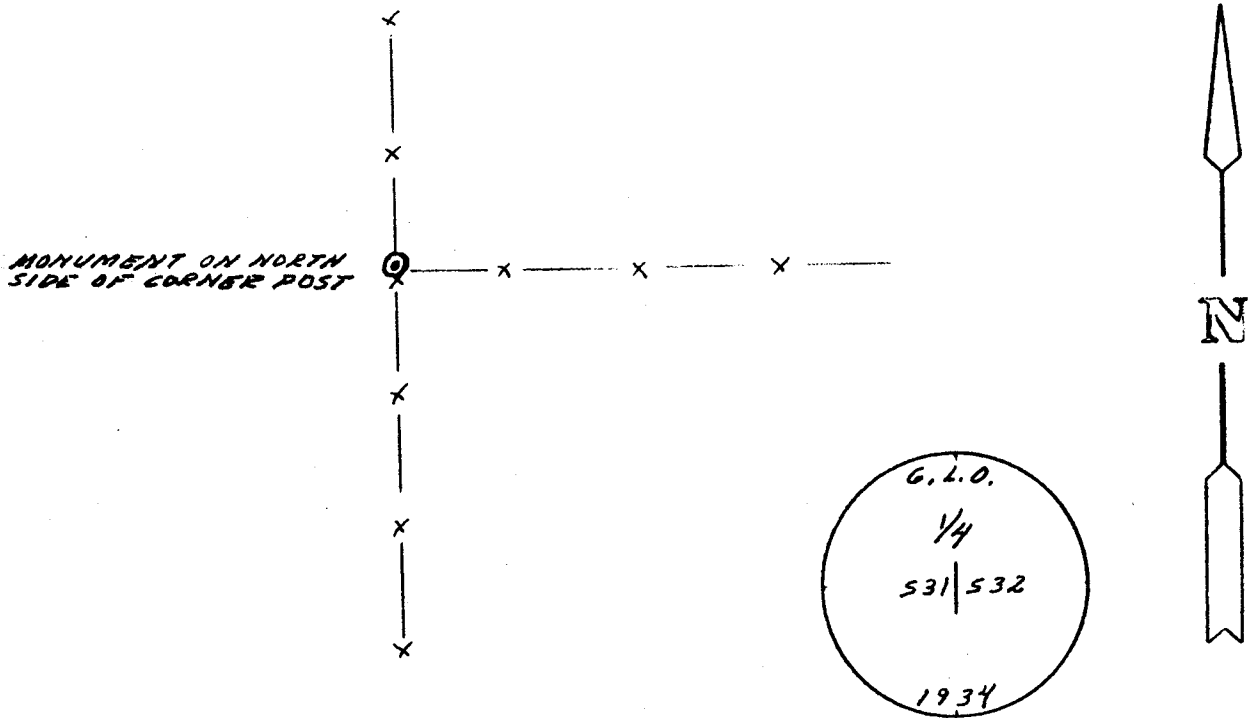
7, 14 N.  
1/4 31 | 32  
R 70 W

FOUND: STANDARD G. L. O. MONUMENT, 1" IRON PIPE WITH 2 1/2" BRASS CAP PROJECTING 0.5 FEET ABOVE GROUND, AND STAMPED AS SHOWN BELOW

DESCRIPTION OF MONUMENT AND ACCESSORIES ESTABLISHED TO PERPETUATE THE ORIGINAL LOCATION OF THIS CORNER:

SEE TIES BELOW

SKETCH, WITH COURSE AND DISTANCE TO ADJACENT CORNER IF DETERMINED IN THIS SURVEY. (May Sketch or Paste Reproduction on Reverse Side.)



I, JOHN A. STEIL certify that I have carefully performed or reviewed the work done on the diagrammed corner as reported on this recordation form and approve the same.

John A. Steil  
Signature of Surveyor

45,2500  
Registration No.

STATE OF WYOMING,  
Office of Clerk and Recorder,  
County of Laramie

This "corner record" was filed for record on the 28 day of August, 1987, was noted on the cross-index plat and is assigned page No. \_\_\_\_\_, in book No. \_\_\_\_\_

John C. Whitcomb  
County Official

Cross Index No. <u>X-5</u>	T. <u>14 N</u>	R. <u>70 W</u>	Mer. <u>6 21</u>
_____	T. _____	R. _____	Mer. _____
_____	T. _____	R. _____	Mer. _____
_____	T. _____	R. _____	Mer. _____
_____	T. _____	R. _____	Mer. _____
_____	T. _____	R. _____	Mer. _____
_____	T. _____	R. _____	Mer. _____